

## **C35 LED Filament Bulb Specification**

LED Filament bulbs look just like their traditional incandescent counterparts thanks to a unique new LED technology that allows for very small LED emitters to be arranged in a linear filament style package. These emitters are then powered using a traditional glass insulated circuit similar to that found in a traditional incandescent bulb. The end result is a bulb that functions and looks virtually identical to an incandescent. The best part is LED filament bulbs can come in all shapes and sizes just like an incandescent. The filament LEDs can even be made with super warm 2200K color temperatures or coated glass to provide a vintage look just like original Edison or Marconi style filament bulbs. These bulbs are perfect for restaurants, high end retail stores, or even homes that wish to show off a fixture where a typical LED just wouldn't look proper.



**Model: C35/B10**

### **Product features:**

1. High Light efficiency: The Whole Light efficiency is more than 100lm/w
2. High CRI: Ra>80; Ra90 is also available
3. Instant start and no flicker, protect people eyes.
4. No ultraviolet and infrared ray, and no mercury.
5. Easy to installation and to replace halogen or CFL lamps
6. With the sapphire substrate have good thermal radiation.
7. Saves more than 70% energy
8. CE, ROHS ETL cETL Approved
9. 3 year warranty
10. E14/E12 Base Optional
11. Various CCT optional: 2200K/2700K/4000K/6000K
12. Glass covers : Clear / Frosted / Milky/Amber available
13. Dimmable

**Parameter:**

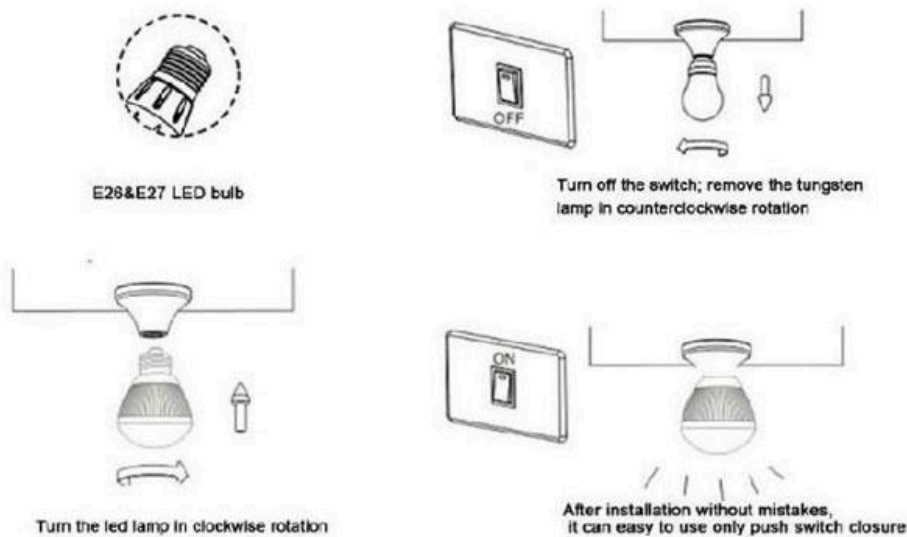
Model No.	C35N6A	
Working Voltage	AC110-130V/ 220-240V 50Hz/60Hz	
Power	6W	
LED Qty	6pcs	
Size	Φ35*100mm	
Color Temperature	2200K/2700K/4000K/6000K	
Material:	Glass and Copper base	
Lifespan	>25000h	
Glass cover	Clear/Frosted/Milky White/ Amber	
Color rendering index	Ra≥ 80	
Power Factor(PF)	No dimmable version PF>0.4 ; Dimmable version PF>0.85	
Luminous efficiency:	100~120lm/watt	
Beam Angle	360°	
Operating Temperature	-25 to 45 °C	
Lamp Holder	E14/E12	
Net. Weight	50g	
Inner box size	39*39*140MM	
Packing	White box+blister	
Support Dimmer	Yes	
Certificates	CE ROHS ETL cETL	

**Application:**

Retrofit led bulb for Edison bulbs, Ideal for use in antique fixtures, lamps, and wall sconces; prefect alternative solutions in Arts Crafts, Spanish Revival, Bungalow and Craftsman.



### Installation:



### Notice:

1. Read the instruction carefully before use
2. Please ensure the label of packing match with actual product
3. Disconnect the electrical supply before the lamp is installed.
4. Please do not touch the product surface when it is lighting, do not see the lighting sources by eyes directly long time.
5. Indoor use only. RISK OF ELECTRIC SHOCK - USE IN DRY LOCATION ONLY. DO NOT USE IF OUTER LAMP ENVELOPE IS DAMAGED OR BROKEN.
6. Please do not put the product as children's toy.
7. This bulb is recommended for non-enclosed, indoor fixtures. An enclosed fixture could shorten life of the bulb.
8. Do not use this product with ambient temperature over 50°.
9. Do not open-no user-serviceable parts inside.
10. THIS DEVICE IS NOT INTENDED FOR USE WITH EMERGENCY EXITS

### Packaging:



100pcs/Ctn  
42x23x31cm  
3.5kg/ctn