



LED UFO HIGH BAY LIGHT

SYSTEM WATTAGE
100W 120W 150W 200W

MODEL NUMBER
ST-HBL100N ST-HBL150N
ST-HBL120N ST-HBL200N

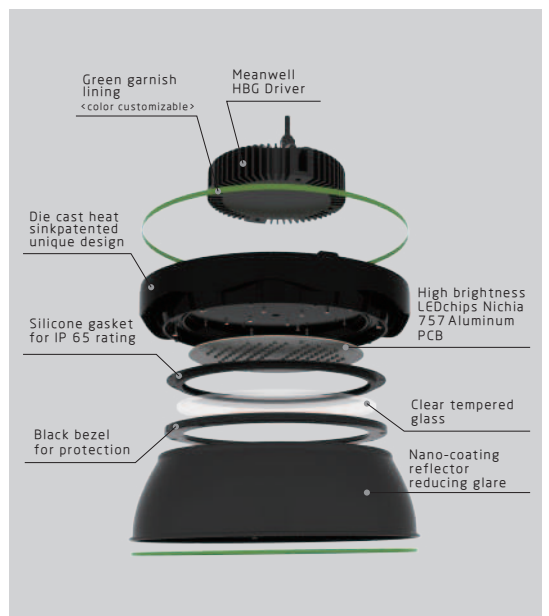
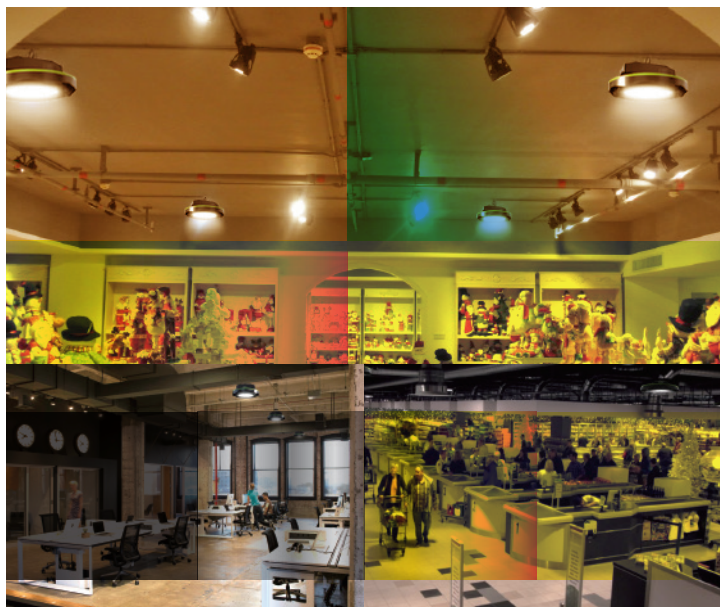
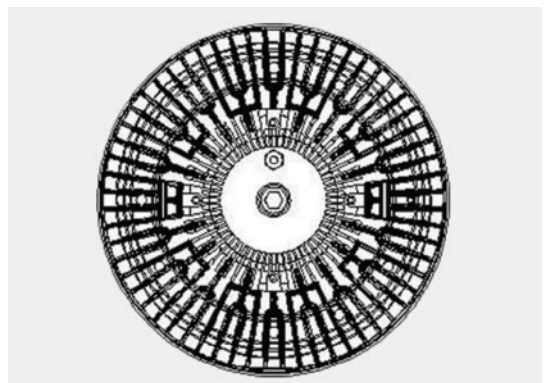
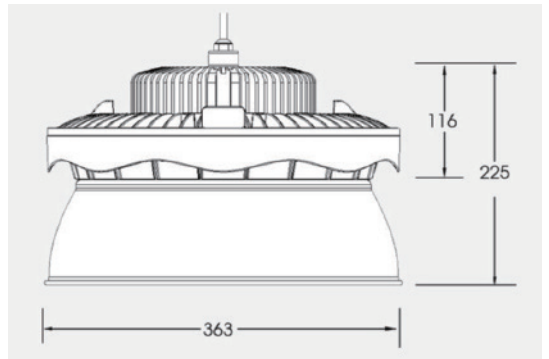




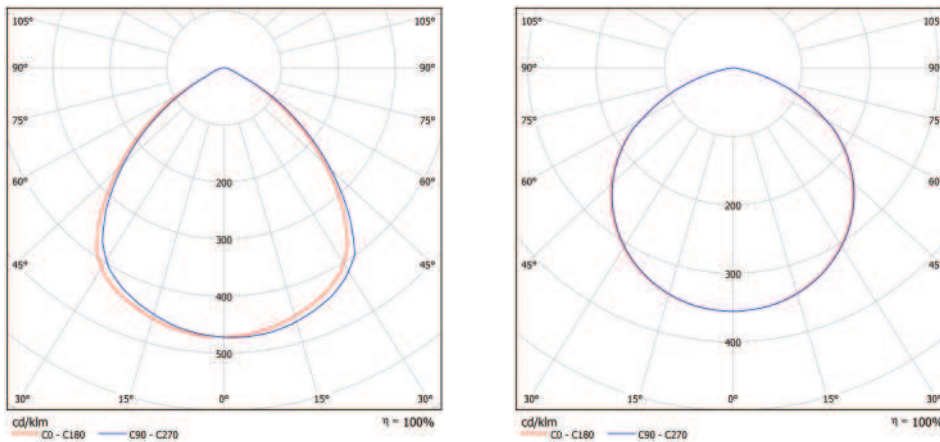



Catalog #		Type
Project		
Comments		Date
Prepared by		

DIMENSION



LIGHT DISTRIBUTION CURVE



DESCRIPTION

Shinetoo Green line series LED UFO high bay light is the ideal lighting solution for warehouse, factory, big box retail, sports arena, Gymnasium, food processing, supermarket etc with reflecting technology anti glare optic design, this luminaire delivers the high lumen output associated with traditional fluorescent and HID highbays.

SPECIFICATION FEATURES

OPTICS

Narrow 90 degree and wide 120 degree beam angle optional.

SENSOR

Daylight and motion sensor is available. Max get 80% energy saving.

SMART CONTROL

Zigbee available.

ACCESSORIES OPTIONAL

Wire guard and bracket available.

HOUSING

Durable Rugged die casting Aluminum design ensure the perfect heat dissipation.

MOUNTING

V hook standard for chain/cable mount. (chain/cable not included). Bracket for surface mounted optional.

DRIVER

Class 1 driver. 0-10V dimming or Dali is optional.

GLASS

IK08 rated steel glass.

RETROFIT

100-200W capable of delivering equivalent brightness to 200-500W HID fixture.

WARRANTY

Up to 5 years warranty.

ELECTRIC SYSTEM

Universal voltage power supply, 90-305VAC, 50/60 HZ, 180-528V optional.

SAMPLE ORDER NUMBER: ST-HBL100N

BRAND	PRODUCTS	WATTS	
ST=Shinetoo	LHM=HIGH BAY LIGHT	100=100W 150=150W 120=120W 200=200W	

TECHNICAL AND PERFORMANCE DATA

MODEL NUMBER	ST-HBL100N	ST-HBL120N	ST-HBL150N	ST-HBL200N
LED LIGHT SOURCE	Nichia	Nichia	Nichia	Nichia
DRIVER	Meanwell driver	Meanwell driver	Meanwell driver	Meanwell driver
LUMEN OUTPUT@5000K	13000LM	15600LM	19500LM	26000LM
SYSTEM WATTAGE	100W	120W	150W	200W
LPW	130LM/W	130LM/W	130LM/W	130LM/W
CRI	70/80RA	70/80RA	70/80RA	70/80RA
INPUT VOLTAGE (LOW VOLTAGE TYPICAL)	90-305V	90-305V	90-305V	90-305V
INPUT VOLTAGE (HIGH VOLTAGE OPTIONAL)	180-528V	180-528V	180-528V	180-528V
OPERATING TEMPERATURE	-40°C to 70°C	-40°C to 70°C	-40°C to 70°C	-40°C to 70°C
CCT	2700K-7000K	2700K-7000K	2700K-7000K	2700K-7000K
IP RATING	IP 65	IP 65	IP 65	IP 65
LIFE TIME	50000 hours	50000 hours	50000 hours	50000 hours
Net Weight	6.4KG	6.4KG	6.4KG	6.4KG

LISTING - cULus listed NO.E361637. For a list of the specific products in this series that are DLC listed, please consult the LED Lighting section of our website or the Design Lights website at www.designlights.org

This product, or selected versions of this product, meet the standards listed below. Please consult factory for your specific requirements.

