

LUMEINA – LED MODULE AND DRIVER INSTALLATION INSTRUCTIONS



Read the installation instructions and all product labels before installing the fixture. This product must be installed in full accordance with applicable electrical and building. Installation should be performed by a qualified electrician in accordance with the Canadian national electrical standards and relevant local codes.

CAN ICES-005 (B) - This lighting equipment complies with Canadian standard ICES-005 for use in residential applications.

TO PREVENT ELECTRICAL SHOCK, POWER SHOULD BE TURNED OFF FROM THE ELECTRICAL PANEL BEFORE INSTALLATION OR MAINTENANCE

SAFETY WARNINGS

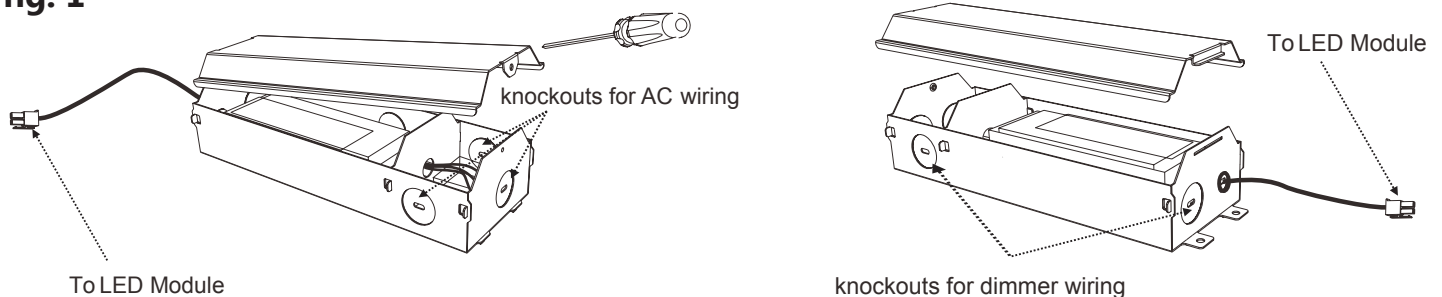
- Turn off the electricity prior to the installation of the fixture.
- Connect to a 120V supply in accordance with relevant electrical standards.
- Make sure that all connections are tight and that there is no loose strands.
- Do not make any open holes or alter an enclosure of wiring or electrical components during the installation.
- The module is intended for mounting in an indoor application only.
- Suitable for dry locations.
- **6W module only** - Suitable for IC installation.
- **9W module only** - Do not cover the module with insulation material

THIS FIXTURE INCLUDES ONE LED MODULE AND ONE DRIVER.

INSTALLATION INSTRUCTIONS

1. Turn off the power from the electrical panel before starting the installation.
2. Locate a suitable position to place the fixture and cut a hole in the ceiling according to the size of the selected trim (see selection listed below-trims are sold separately).
3. Run the electrical wire from the switch (power supply) through the mounting hole
4. Open the driver box and remove the appropriate knockouts. (Fig.1)
5. Insert the electrical supply cable through the knockout and fasten with a channel connector (not included).
6. Using wire caps – connect green /yellow wire to the ground wire (copper). Connect white wire of cable to white wire of the box. Connect black wire of cable to black wire of the box.
7. Place all wiring and connections back into the driver box and close the cover.
8. Unscrew and remove the top ring of the LED module. (Fig.2)
9. Screw the LED module onto the selected trim (sold separately). (Fig.3)
10. Using the luminaire disconnect, connect the white wire of the driver with the white wire of the LED downlight.
11. Insert driver box through the mounting hole and secure to ceiling joist.
12. Bend back the two torsion springs of the trim and fit the fixture in the ceiling hole (Fig.4). Slowly release unit up to the ceiling and the springs will hold fixture in place (Fig.5).
13. Once installation is complete, switch on power to confirm that the LED fixture -Lumeina is installed properly.

fig. 1



LUMEINA – LED MODULE AND DRIVER INSTALLATION INSTRUCTIONS



fig. 2

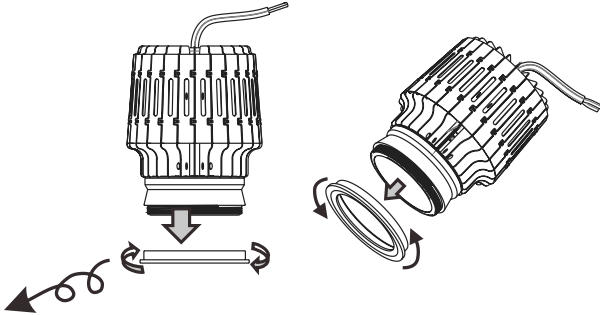


fig. 3

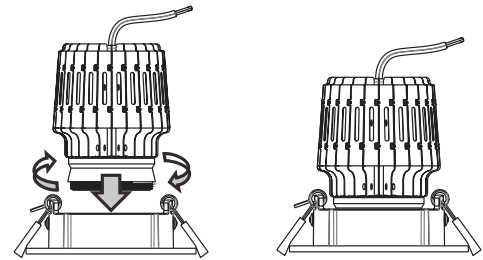


fig. 4

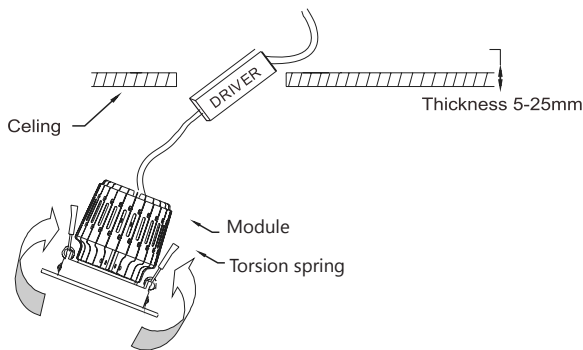
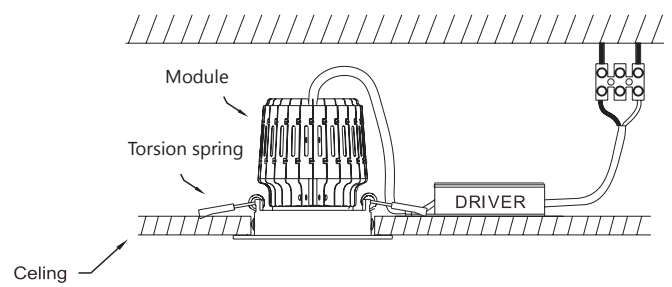
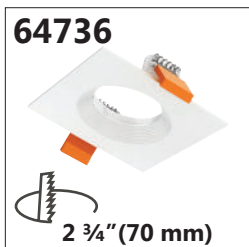


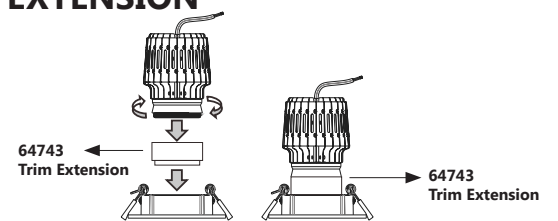
fig. 5



TRIMS & CUTTING DIAMETER



ACCESSORY - TRIM EXTENSION



*Do not use in insulated ceilings