

## Phase 3 LED

Wall Mounted • Damp Location Listed PROGRESS LED

### Description:

Phase 3 Collection 16 in. Matte Black Small Modern 3CCT Integrated LED Linear Vanity Light

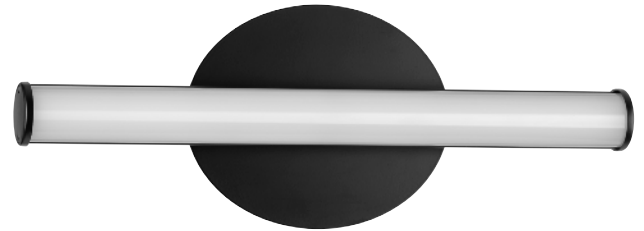
### Specifications:

- Diffused Plastic Cylindrical
- Dimmable to 10% brightness (See Dimming Notes)
- Canopy covers a standard 4" recessed outlet box: 6.09 in W., 4.96 in ht., 1.38 in depth
- Swivel mounting strap for outlet box included
- 10 in of wire supplied
- Americans With Disabilities Act (ADA) compliant

### Performance:

Input Power	11 W
Input Voltage	120 V
Input Frequency	60 Hz
Lumens/LPW (Delivered)	1,083/98 (LM-79)
CRI	90 CRI
Life (hours)	50000 (L70/TM-21)
EMI/RFI	FCC Title 47, Part 15, Class B
Warranty	5-year Limited Warranty
Labels	cCSAus Damp Location Listed Meets California Title 24 JA8-2016

# P300410-31M-CS



### Dimensions:

Width: 16 in  
Extends: 3 in  
Height: 5-11/16 in (glass facing up)

**Photometrics:**

---

**P300410-31M-CS**

<b>ELECTRICAL DATA</b>	<b>P300410-31M-CS</b>
Input Voltage	120 V
Input Frequency	60 Hz
THD	<20%
EMI/RFI	FCC Title 47, Part 15, Class B
Operating Temperature	-30 °C to 30 °C
Dimming	Yes*
Over-voltage, over-current, short-circuit protected	

\*See Dimming Notes for more information

# P300410-31M-CS

## Dimming Notes:

---

P300410-31M-CS is designed to be compatible with many ELV/Reverse Phase Triac/Forward Phase controls.

The following is a partial list of known compatible dimmer controls.

## Dimming Controls:

---

Eaton SAL06P

Leviton 6681

Leviton IPI06-1LZ

Leviton 6672

Leviton 6674

Lutron NTEVL-300

Lutron DVELV-300P

Lutron DVCL-253P

Lutron Caseta Wireless

Idevices IDEV009

Lutron AYCL-153P

Lutron SCL-153P

Lutron TGCL-153-PH-WH

Lutron MACL-153M

Dimming capabilities will vary depending on the dimmer control, load, and circuit installation.

Always refer to dimmer manufacturer instructions or a controls specialist for specific requirements.

Dimmer control brand names where identified above are trade names or registered trademarks of each respective company.