

# P8720 SERIES TRACK

Single-circuit track mounted **PROGRESS LED**

## Description:

---

Straight connector for joining two or more track sections. The connectors plug into track sections only one way to ensure positive polarization.

## Specifications:

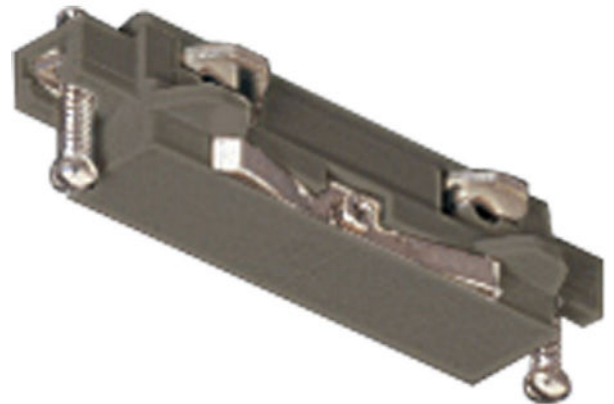
---

- Brushed Nickel finish.
- 120 V
- 1 year warranty
- 

## P8720-09

## Images:

---



## Dimensions:

---

Width: 3"  
Height: 1-1/4"